

## **SUPERINTENDENT'S HONORS MUSIC FESTIVAL**

### **Elementary School Honors Recorder Ensemble Audition Information**

Carlos Garcia, Conductor

Samuel Entenza, Pianist

Cara Favasoli, Coordinator

### **Audition Information**

Deadline Date: Friday, January 31, 2023, until 11:59PM

Location: Virtual using Flip

**Please Note: The Elementary School Honors Recorder Ensemble is open to students in grades 3-5.**

### **Audition Requirements**

1) Scale:

- G major scale (up to the high A, down to the low D, then back up to the G) (see page 2)
- The rubric is located on pages 3.

2) Prepared Selection:

- "Bohemian Rhapsody" (see page 2)
- The rubric is located on page 4.

The Recorder Ensemble will perform on soprano, alto, tenor, and bass recorder. Students may express a preference for one of these recorders to their teacher, who will then communicate this to either the Coordinator or the Conductor. Hand size will be taken into consideration, should the student wish to play the tenor, or the bass recorder.

Questions? Contact us at [favasoli@gmail.com](mailto:favasoli@gmail.com) or [Garcia31@dadeschools.net](mailto:Garcia31@dadeschools.net)

2.

## G Major Scale

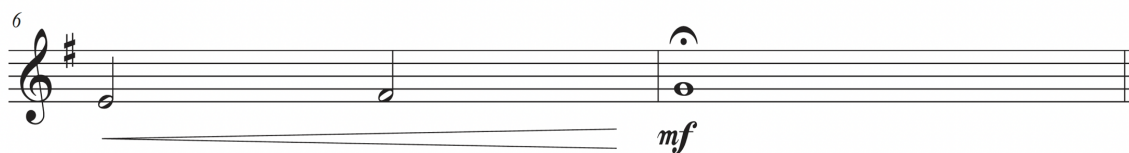
Up to the High A and Down to the Low D

♩ = 120

Soprano Recorder



S. Rec.



Score

## Bohemian Rhapsody

Freddie Mercury

C. Favasoli

With conviction ♩ = 76

Soprano Recorder



S. Rec.



3.

### Part 1- Scale Rubric - G Major Scale

	4 Points	3 Points	2 Points	1 Point	0 Points
<b>Playing Technique</b>	<ul style="list-style-type: none"> <li>• 100% tonguing accuracy</li> <li>• Fingers covering holes</li> <li>• Left hand on top</li> <li>• Instrument held at 45-degree angle from body</li> <li>• Upright posture</li> </ul>	<ul style="list-style-type: none"> <li>• 1-2 tonguing errors</li> <li>• Fingers covering holes</li> <li>• Left hand on top</li> <li>• Instrument held at 45-degree angle from body</li> <li>• Upright posture</li> </ul>	<ul style="list-style-type: none"> <li>• 3-4 tonguing errors</li> <li>• Incorrect finger position</li> <li>• Wrong hand on top</li> <li>• Instrument held too close to body</li> <li>• Upright posture</li> </ul>	<ul style="list-style-type: none"> <li>• 5 or more tonguing errors</li> <li>• Incorrect finger position</li> <li>• Wrong hand on top</li> <li>• Instrument held greater than 45-degree angle from body</li> <li>• Incorrect posture</li> </ul>	<ul style="list-style-type: none"> <li>• Does not complete G major scale</li> </ul>
<b>Tone Quality</b>	<ul style="list-style-type: none"> <li>• Plays each phrase with one breath</li> <li>• Steady warm air stream with no overblowing</li> <li>• Clear centered rich tone</li> </ul>	<ul style="list-style-type: none"> <li>• 1-2 breathing errors</li> <li>• Steady warm air stream with no overblowing</li> <li>• Clear centered rich tone</li> </ul>	<ul style="list-style-type: none"> <li>• 3-4 breathing errors</li> <li>• Steady warm air stream with slight overblowing</li> <li>• Thin tone</li> </ul>	<ul style="list-style-type: none"> <li>• 5 or more breathing errors</li> <li>• Overblown air stream</li> <li>• Squeaky tone</li> </ul>	<ul style="list-style-type: none"> <li>• Does not complete G major scale</li> </ul>
<b>Rhythmic Accuracy</b>	<ul style="list-style-type: none"> <li>• Maintains steady tempo throughout at 80 bpm for G major scale</li> <li>• Plays all rhythms as written on page</li> </ul>	<ul style="list-style-type: none"> <li>• Maintains steady tempo at less than 60 bpm or faster than 60 bpm for G major scale</li> <li>• 1-2 rhythmic errors</li> </ul>	<ul style="list-style-type: none"> <li>• Does not maintain a steady tempo</li> <li>• 3-4 rhythmic errors</li> </ul>	<ul style="list-style-type: none"> <li>• Does not maintain steady tempo</li> <li>• 5 or more rhythmic errors</li> </ul>	<ul style="list-style-type: none"> <li>• Does not complete G major scale</li> </ul>
<b>Melodic Accuracy</b>	<ul style="list-style-type: none"> <li>• Plays all pitches as written on page with correct fingerings</li> </ul>	<ul style="list-style-type: none"> <li>• 1-2 errors in pitches and/or fingerings</li> </ul>	<ul style="list-style-type: none"> <li>• 3-4 errors in pitches and/or fingerings</li> </ul>	<ul style="list-style-type: none"> <li>• 5 or more errors in pitches and/or fingerings</li> </ul>	<ul style="list-style-type: none"> <li>• Does not complete G major scale</li> </ul>

4.

<b>Part 2- Prepared Selection Rubric “Bohemian Rhapsody”</b>					
	4 Points	3 Points	2 Points	1 Point	0 Points
<b>Playing Technique</b>	<ul style="list-style-type: none"> <li>• 100% tonguing accuracy</li> <li>• Fingers covering holes</li> <li>• Left hand on top • Instrument held at 45-degree angle from body</li> <li>• Upright posture</li> </ul>	<ul style="list-style-type: none"> <li>• 1-2 tonguing errors</li> <li>• Fingers covering holes</li> <li>• Left hand on top • Instrument held at 45-degree angle from body</li> <li>• Upright posture</li> </ul>	<ul style="list-style-type: none"> <li>• 3-4 tonguing errors</li> <li>• Incorrect finger position</li> <li>• Wrong hand on top</li> <li>• Instrument held too close to body • Upright posture</li> </ul>	<ul style="list-style-type: none"> <li>• 5 or more tonguing errors</li> <li>• Incorrect finger position</li> <li>• Wrong hand on top</li> <li>• Instrument held greater than 45-degree angle from body</li> <li>• Incorrect posture</li> </ul>	<ul style="list-style-type: none"> <li>• Does not complete piece</li> </ul>
<b>Tone Quality</b>	<ul style="list-style-type: none"> <li>• Plays each phrase with one breath</li> <li>• Steady warm air stream with no overblowing</li> <li>• Clear centered rich tone</li> </ul>	<ul style="list-style-type: none"> <li>• 1-2 breathing errors</li> <li>• Steady warm air stream with no overblowing</li> <li>• Clear centered rich tone</li> </ul>	<ul style="list-style-type: none"> <li>• 3-4 breathing errors</li> <li>• Steady warm air stream with slight overblowing</li> <li>• Thin tone</li> </ul>	<ul style="list-style-type: none"> <li>• 5 or more breathing errors • Overblown air stream</li> <li>• Squeaky tone</li> </ul>	<ul style="list-style-type: none"> <li>• Does not complete piece</li> </ul>
<b>Rhythmic Accuracy</b>	<ul style="list-style-type: none"> <li>• Maintains steady tempo throughout for “Bohemian Rhapsody”</li> <li>• Plays all rhythms as written on page</li> </ul>	<ul style="list-style-type: none"> <li>• Maintains steady tempo for “Bohemian Rhapsody”</li> <li>• 1-2 rhythmic errors</li> </ul>	<ul style="list-style-type: none"> <li>• Does not maintain a steady tempo</li> <li>• 3-4 rhythmic errors</li> </ul>	<ul style="list-style-type: none"> <li>• Does not maintain steady tempo</li> <li>• 5 or more rhythmic errors</li> </ul>	<ul style="list-style-type: none"> <li>• Does not complete piece</li> </ul>
<b>Melodic Accuracy</b>	<ul style="list-style-type: none"> <li>• Plays all pitches as written on page with correct fingerings</li> </ul>	<ul style="list-style-type: none"> <li>• 1-2 errors in pitches and/or fingerings</li> </ul>	<ul style="list-style-type: none"> <li>• 3-4 errors in pitches and/or fingerings</li> </ul>	<ul style="list-style-type: none"> <li>• 5 or more errors in pitches and/or fingerings</li> </ul>	<ul style="list-style-type: none"> <li>• Does not complete piece</li> </ul>